

CENTELLA

COLLAGEN STIMULATOR



ANTI-WRINKLE

CENTELLA

COSMÉLÈNES®

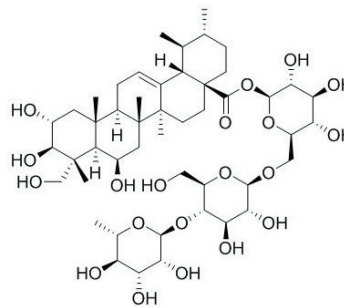
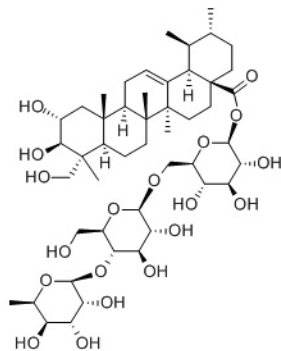
> ACTIONS

- Smoothes skin profile
- Reduces medium and deep wrinkles
- Reduces overall wrinkled area

COMPOSITION

Triterpenes

- Asiaticoside
- Madecassoside



ORIGIN

Centella, Indian pennywort
Centella asiatica
(Leaf)



> MECHANISM OF ACTION

It activates the collagen synthesis by fibroblasts, thereby maintaining the skin architecture and functions.

> COSMETIC BENEFITS

- The skin is firmer and smoother, the number and depth of medium and deep wrinkles decreases, as does the total wrinkled area.
- The face appears younger.

> COSMETIC USES

- ▶ Anti-ageing care products
- ▶ Anti-wrinkle care products
- ▶ Tensor care products
- ▶ Mature skin care products

> SCIENTIFIC PROCESS

- The extracellular matrix (ECM) found in the dermis plays a major role in the establishment and maintenance of skin architecture, nutrition, adhesion and intercellular communication.

The ECM is based on a network of collagen fibres (mainly collagens I and III), forming a tangle in which various cells and fibres are trapped (elastin, glycosaminoglycans, proteoglycans, etc.).



ECM renewal through increased collagen synthesis by fibroblasts

• **With a standardized triterpene content** (asiaticoside and madecassicoside), COSMÉLÈNE® CENTELLA has a eutrophic and regulatory effect on connective tissue nutrition, in particular on fibroblasts and glycosaminoglycans; it enhances collagen I and III synthesis, promotes keratinization and stimulates the healthy and rapid growth of tissue components, thus driving the healing process. Several *in vitro* studies have shown that the secretion of collagen I (representing 80 to 90% of total collagen) is improved by asiaticoside and madecassicoside, while collagen III synthesis is enhanced by madecassicoside alone.

> **PROVEN EFFICACY**

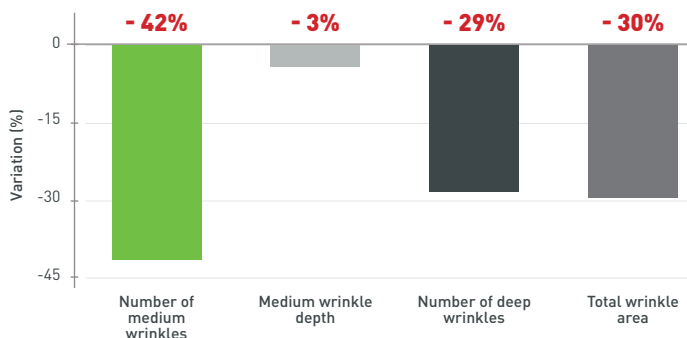


PREDICTIVE EVALUATION OF ANTI-WRINKLE EFFECT*

Studies conducted on 6 volunteers, COSMÉLÈNE® CENTELLA at a concentration of 10%

- Number of medium wrinkles: up to **-42%**
- Depth of medium wrinkles: up to **-3%**
- Number of deep wrinkles: up to **-29%**
- Total wrinkled area: up to **-30%**

* 28 days of twice-daily application.



FORMULATION

Concentration for use: 1 to 10%

Caution for use

Add to emulsions, at the end of the preparation process, either cold or at 35-40 °C, during cooling.

TECHNICAL DATA

Characteristics

Organoleptic	Appearance: clear liquid Colour: pale yellow to greenish yellow
---------------------	--

Storage

Keep in a dark place, in the original packaging and at ambient temperature (15-25 °C). Use rapidly once opened, or transfer to sterile packaging.

Tolerance tests

- Eye irritation: non-irritant
- Skin irritation: non-irritant

INCI name: Butylene Glycol, Centella Asiatica Extract

Preservative: None

Authorized:

Important: The information in this document are the result of studies and interpretations based in part on published or generally accepted scientific data. They are provided for information purposes in terms of possible end applications and cannot be considered as instructions for use. We accept no responsibility concerning marketed formulas containing one or more of our products. Compounders must take all necessary precautions and ensure that all legal and administrative formalities have been fulfilled.

June 2017 edition