

PHYTELENE COMPLEXION LIGHTENING - EGX 293



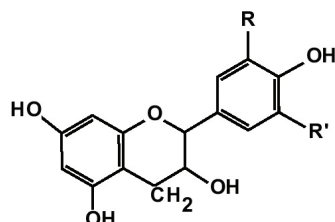
COMPLEXION
PHYTELENE
COMPLEXION LIGHTENING
COMPLEXES

> ACTIONS

- Lightens the complexion and gives it radiance
- Evens and illuminates the complexion
- Combats pigmentation spots

COMPOSITION

Flavonoids
Saponins
Glycosides
Vitamins
Mineral salts and trace elements



ORIGIN

- Daisy
Bellis perennis
(Flower)
- Madonna lily
Lilium candidum
(Flower)
- Licorice
Glycyrrhiza glabra
(Root)
- Camu camu
Myrciaria dubia
(Seed)



> MECHANISM OF ACTION

PHYTELENE COMPLEXION LIGHTENING - EGX 293 acts in a synergistic and complementary manner on the complexion: it inhibits melanogenesis and tyrosinase, protects against free radicals and reduces inflammation thanks to its dermis-purifying properties.

> COSMETIC BENEFITS

- The complexion is lighter, brighter and even, dark spots are reduced.

> COSMETIC USES

▶ **Lightening and anti-dark spot care products**

▶ **Anti-ageing care products**

> SCIENTIFIC PROCESS

• INHIBITION OF MELANOGENESIS

Glabridin (isoflavin) and isoliquiritigenin (chalcone) contained in Camu-camu and Licorice limit melanin synthesis in melanocytes and prevent the long-term formation of dark skin spots.

• INHIBITION OF TYROSINASE

Thanks to polyphenols in Licorice and Daisy. The appearance of new pigmentation spots resulting from melanin formation is markedly reduced.

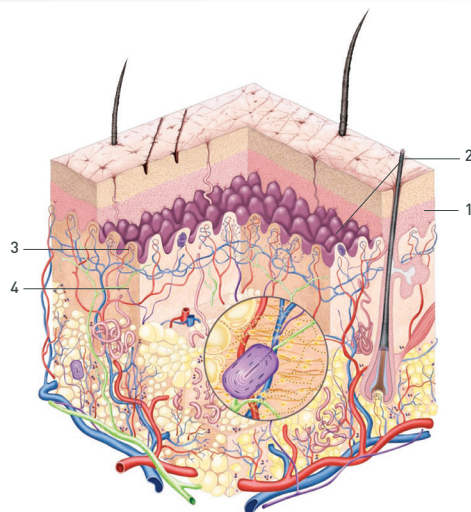
• PROTECTION AGAINST FREE RADICALS

Licorice, Camu-camu and Madonna lily calm down inflammation. Their anti-elastase activity protects newly produced elastin fibres and promotes connective tissue repair.

• DERMIS-PURIFYING PROPERTIES

Liquorice, Daisy and Madonna lily help to regulate sebum secretions, cleanse epidermis to accelerate the re-epithelialization process and to refine skin's texture. The complexion is even.

- 1 - Inhibits melanogenesis
- 2 - Inhibits tyrosinase
- 3 - Protects against free radicals
- 4 - Anti-inflammation



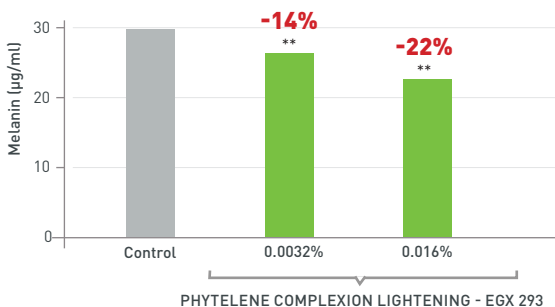
> PROVEN EFFICACY



INHIBITION OF MELANOGENESIS: A DUAL LIGHTENING ACTION

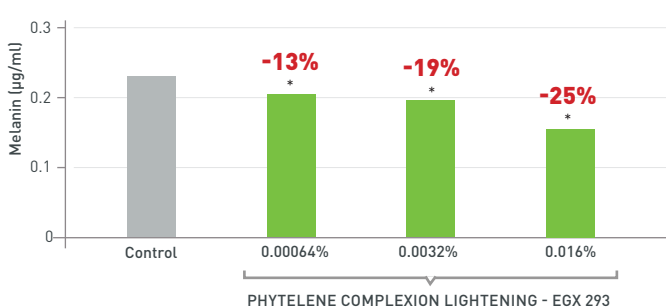
Evaluation in human normal melanocyte and keratinocyte cultures

• Inhibition of melanin synthesis



** Significantly different from control (p=0.001 to 0.01)

• Inhibition of melanosomes transfer to keratinocytes



* Significantly different from control (p>0.05)

FORMULATION

Concentration for use: 1 to 5%

Caution for use:

Add to emulsions, at the end of the preparation process, either cold or at 35-40 °C, during cooling.

TECHNICAL DATA

Characteristics

Organoleptic Appearance: liquid
Colour: pale amber to dark amber

Solubility Water: soluble

Storage

Keep in a dark place, in the original packaging and at ambient temperature (15-25 °C). Use rapidly once opened, or transfer to sterile packaging.

Tolerance tests

- Eye irritation: non-irritant
- Skin irritation: non-irritant

INCI name: Butylene Glycol, Bellis Perennis Flower Extract, Lilium Candidum Flower Extract, Glycyrrhiza Glabra Root Extract, Myrciaria Dubia Seed Extract.

Preservative: None

Authorized:

Bibliographic references: **(1)** ADHIKARI [A]; DEV KOTA [HP]; SKALKO-BASNET [N] et al. 2008. Int J Cosmet sci 30(5): 353-60 - **(2)** INOUEIT; KOMODA[H]; UCHIDA[T]; NODE[K]. 2008. Journal of cardiology 52(2): 127-32 - **(3)** MUCAJI [P]; GRAN CAI [D]. 2007. Ceska slov Farma 56(1): 27-9 - **(4)** ZANATTA [CF]; MERCADANTE [AZ]. 2007. Food Chemistry. 101(4): 1526-32 - **(5)** MARTINI [MC]; SEILLER [M]. Actives and addictives in cosmetology, 2006, 3 ed; p 703-16 - **(6)** GUPTA [VK]; FATIMA [A]; FARIDI [U]; NEGI [AS]; SHAN KER[K]; KUMA R [5N]; KHANUJA [SPS]. 2008. Journal of Ethnopharmacology 116(2): 377-80 - **(7)** DI MAMBRO [VM]; FONSE CA [MJ]. 2005. J Pharm Biomed anal 37(2): 287-95 - **(8)** LI[W]; ASADA [Y]; FURUYA[T]; YOSHIKAWA[T]. 2005. Tetrahedron 61(11): 2921-29 - **(9)** GUDEJ [J]; NA ZARUK [J]. 2001. Fitoterapia 72(7): 839-40 - **(10)** LI [W]; ASADA [Y]; YOSHIKAWA [T]. 2000. Phytochemistry 55(5): 447-56 - **(11)** MIMAKI[Y]; SAT OU [T]; KURODA [M]; SAS HIDA [Y]; HATA KEYAMA [Y]. 1999. Phytochemistry, 51(4), 567-73 - **(12)** SCHOPKE[T]; WEAY [V]; RZAZEWSKA [B]; HILLER [K]. 1991. Phytochemistry 30(2): 627-31 - **(13)** MASTEROVA [I]; UHRIN [D]; TOMKO [J]. 1987. Phytochemistry 26(6): 1844-45 - **(14)** YOSHIKAWA [M]; LI [X]; MORIKAWA [T]. 2008. Chemical and Pharmaceutical Bulletin, 56(4), 559-68.

Warning: The information in this document are the result of studies and interpretations based in part on published or generally accepted scientific data. They are provided for information purposes in terms of possible end applications and cannot be considered as instructions for use. We accept no responsibility concerning marketed formulas containing one or more of our products. Compounders must take all necessary precautions and ensure that all legal and administrative formalities have been fulfilled.

Edition, November 2017