

KIGELINE®

PATENT

BUST LIFTER



FIRMNESS

KIGELINE®

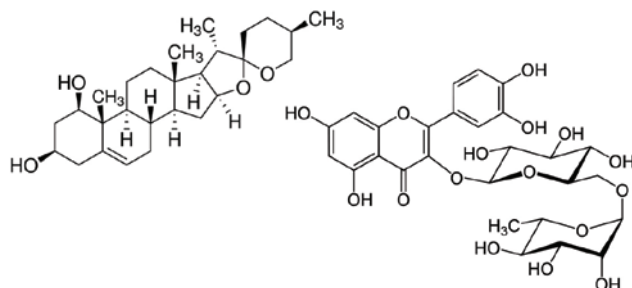
PHYTOBIOACTIVE

> ACTIONS

- Tones and firms bust
- Lifts chest
- Improves skin firmness and elasticity

COMPOSITION

- **Flavonoids** (expressed in rutins): 10-100 mg/l
- **Saponosides** (expressed in ruscogenin): 0.5-10 g/l



ORIGIN

Kigelia
Kigelia africana
(Pulp)

Fruit pulp of this sacred African tree is traditionally used by women to firm and enhance their bust.



> MECHANISM OF ACTION

Simultaneous provision of saponins and phytosterols, with their hormone-like properties, and of veinotonic flavonoids, visibly firms skin and bust.

> COSMETIC BENEFITS

- By improving dramatically skin firmness and elasticity, KIGELINE® has a strong lifting effect on breasts.
- Bust regains a tone and younger-looking neckline.

> COSMETIC USES

- ▶ **Firming care products**
- ▶ **Bust care products**

> SCIENTIFIC PROCESS

- Breasts are connected to the thorax by Cooper's ligaments. With no tensor muscles, their only support is skin envelope. The sagging of this tissue (caused by multiple factors: childbirth, slimming, menopause, etc.) leads to a loss of breast tension and firmness.

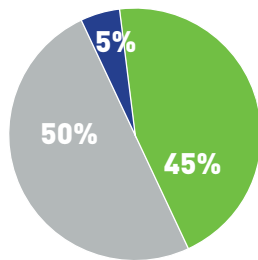
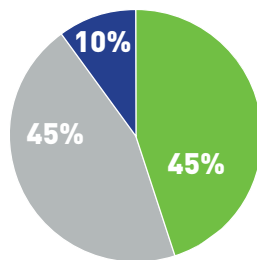
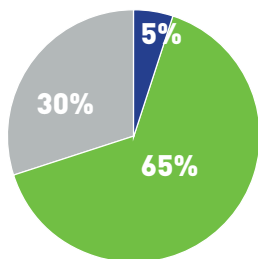
- **Saponins** and **phytosterols**, with their hormone-like properties, stimulate the activity of dermal fibroblasts, increase water, hyaluronic acid and collagen content.

Flavonoids, with their vasculoprotective and veinotonic action, combat skin ageing. Simultaneous provision of these modules serves to firm bust and breasts.

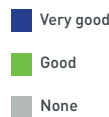
> PROVEN EFFICACY

SENSORY STUDY (20 VOLUNTEERS)

- Bust and skin firmness: **> 50%**
- Improves skin elasticity: **70%**

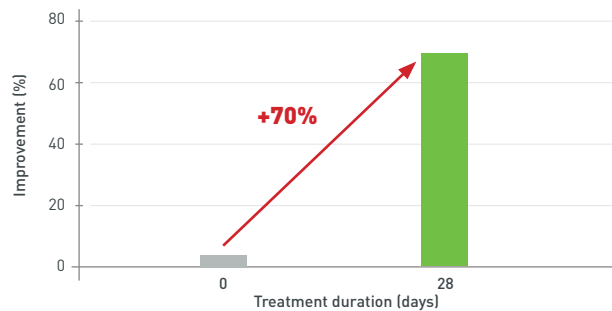
Improves
bust firmnessImproves
skin firmnessImproves
skin elasticity

Used as a gel, 5% KIGELINE® once daily for 28 days



REDRESSEMENT DU BUSTE BUST LIFTING

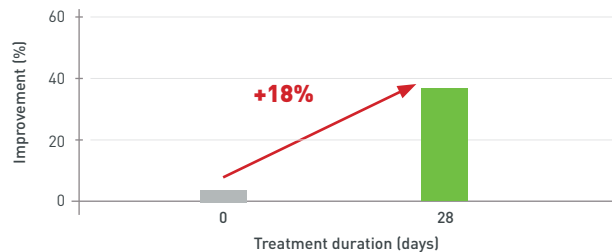
- Bust firming: **70%**, KIGELINE® at a concentration of 20% for 21 days



Objective evaluation by iconography: angle measurements

VARIATION IN BREAST FOLD LENGTH

- Breast is lifted by **18%**, KIGELINE® at a concentration of 5% for 28 days



FORMULATION

Concentration for use: 1 to 5%**Formulation pH:** 4 to 6,5**Caution for use:**

Add to emulsions, at the end of the preparation process, either cold or at 35-40 °C, during cooling

TECHNICAL DATA

Characteristics

Organoleptic	Appearance: liquid Colour: amber to dark brown
Solubility	Water: soluble

Storage

Keep in a dark place, in the original packaging and at ambient temperature (15-25 °C). Use rapidly once opened, or transfer to sterile packaging.

Tolerance tests

- Eye irritation: mildly irritating
- Skin irritation: non-irritant
- Sensitisation: non-sensitizing

INCI name: Aqua/Water, Kigelia Africana Fruit Extract

Preservative: Several versions available, see specifications

Authorized:

Important: The information in this document are the result of studies and interpretations based in part on published or generally accepted scientific data. They are provided for information purposes in terms of possible end applications and cannot be considered as instructions for use. We accept no responsibility concerning marketed formulas containing one or more of our products. Compounders must take all necessary precautions and ensure that all legal and administrative formalities have been fulfilled.