



# KAPILARINE COMPLEX

HAIR HEALTH  
KAPILARINE COMPLEX  
COMPLEXES

Available

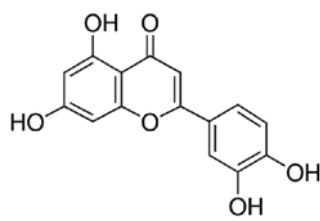
**ORGANIC**  
Version

## > ACTIONS

- Tones the scalp
- Stimulates hair regrowth
- Anti-hair loss

## COMPOSITION

**Flavonoids**  
**Saponosides**  
**Tannins**



## ORIGIN

Cinnamon  
*Cinnamomum zeylanicum*  
(Bark)



- Tannins

Clary sage  
*Salvia sclarea*  
(Plant)



- Flavonoids
- Terpenes
- Rosmarinic acid

Ginkgo  
*Ginkgo biloba*  
(Leaf)



- Flavonoids
- Diterpenes

Kigelia  
*Kigelia africana*  
(Fruit)



- Flavonoids
- Saponosides

## > MECHANISM OF ACTION

KAPILARINE COMPLEX acts in synergy on the main factors preventing hair loss: it inhibits 5- $\alpha$ -reductase, improves scalp micro-circulation, regenerates the dermis by activating cell metabolism and reduces inflammation contributing to seborrhoea.

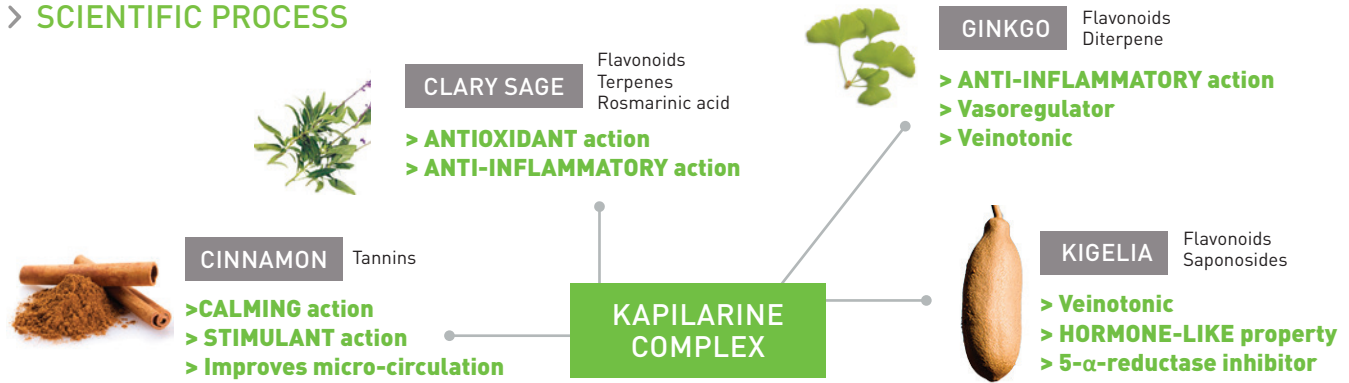
## > COSMETIC BENEFITS

- The hair, full of vitality, grows better and faster, hair loss is reduced.

## > COSMETIC USES

- ▶ Fortifying and repair care products
- ▶ Anti-hair loss care products

> SCIENTIFIC PROCESS

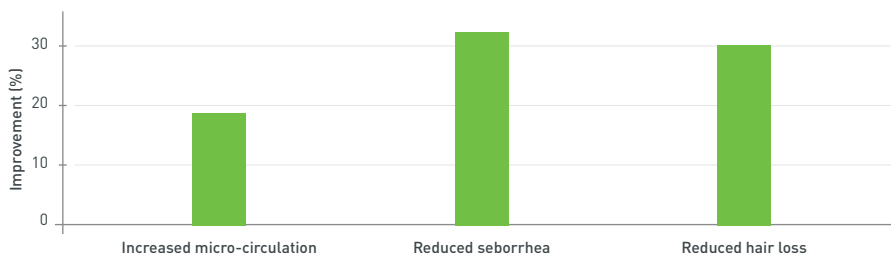


> PROVEN EFFICACY



HAIR STIMULANT EFFECT

- Improved scalp tone by increased micro-circulation **+18%** (60 minutes after application of a 5% formulation)
- Reduced seborrhea **-32%** (after 60 days of application of a 5% formulation)
- Reduced hair loss **-30%** (after 60 days of application of a 5% formulation)



KAPILARINE® acts in synergy toning the scalp and limiting hair loss

FORMULATION

**Concentration for use:** 1 to 5%

**Caution for use:**

Add to emulsions, at the end of the preparation process, either cold or at 35-40 °C, during cooling.

TECHNICAL DATA

**Characteristics**

**Organoleptic** Appearance: liquid  
Colour: yellow to brown

**Solubility** Water: soluble

**Storage**

Keep in a dark place, in the original packaging and at ambient temperature (15-25 °C). Use rapidly once opened, or transfer to sterile packaging.

**Tolerance tests**

- Eye irritation: non-irritant
- Skin irritation: non-irritant

INCI name: Kigelia Africana Fruit Extract, Ginkgo Biloba Leaf Extract, Salvia Sclarea (Clary) Extract, Cinnamomum Zeylanicum Bark Extract

Preservative: Several versions available, see specifications

Authorized:

**Warning:** The information in this document are the result of studies and interpretations based in part on published or generally accepted scientific data. They are provided for information purposes in terms of possible end applications and cannot be considered as instructions for use. We accept no responsibility concerning marketed formulas containing one or more of our products. Compounders must take all necessary precautions and ensure that all legal and administrative formalities have been fulfilled.