

# TILICINE®

## PROTECTIVE HAIR SHEATH



HAIR

TILICINE®

PHYTOBIOACTIVE

Available

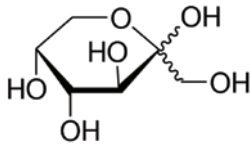
**ORGANIC**  
Version

### > ACTIONS

- Forms a protective film
- Restructures and smooths hair fibres
- Restores suppleness, sheen and volume
- Reduces static electricity

### COMPOSITION

**Fructose:** 250-650 mg/l.  
**Acidic oses:** 65-145 mg/l.



### ORIGIN

Linden  
*Tilia tomentosa* (Fresh buds)  
(Actively dividing embryonic tissues, rich in growth substances such as phytohormones, proteins and sugars)



GREENTECH has taken inspiration from gemmotherapy to extract the essence of the bud, the part of the plant with the highest vitality.

**TILICINE® is obtained via a patented technology: CRYO-EXTRACTION. This freezing process preserves all of the fresh plant's natural active molecules.**

### > MECHANISM OF ACTION

Rich in growth substances and biopolymers, TILICINE® wraps the hair in a film that smooths scales, limits water loss, protects the cuticle and reduces porosity. The hair is protected from UV rays, wind and dryness.

### > COSMETIC BENEFITS

- The hair is smooth and silky, it is easy to detangle. Less electric, they have more volume and are easier to style.

### > COSMETIC USES

- ▶ **Dry hair sheathing and nourishing care products**
- ▶ **Styling products**
- ▶ **2 in 1 shower gel**

### > SCIENTIFIC PROCESS

#### • Hair

Any imbalance (hormonal, nutritional or environmental) will affect the hair. It becomes dull, wiry, porous and brittle. The cuticle scales, that usually interlock, tend to lift and separate, causing the hair to tangle.

#### • TILICINE®

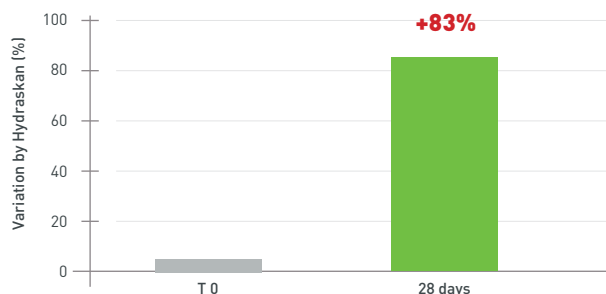
The use of sheathing molecules such as high molecular weight polysaccharides forms a protective film over the hair's surface, smoothing the scales and facilitating detangling. The simultaneous contribution of flavonoids stabilizes the intra- and inter-helix bonds in keratin (fibrous protein making up 95% of hair). Moreover, the use of free sugars (NFM components) maintains a water complex in the upper layers of the scalp epidermis, creating moisturizing homeostasis.

## > PROVEN EFFICACY

IN VIVO  
TESTS

EVALUATION OF THE EFFECTS OF A SHAMPOO CONTAINING **5% TILICINE®**, applied 3 times per day for 28 days

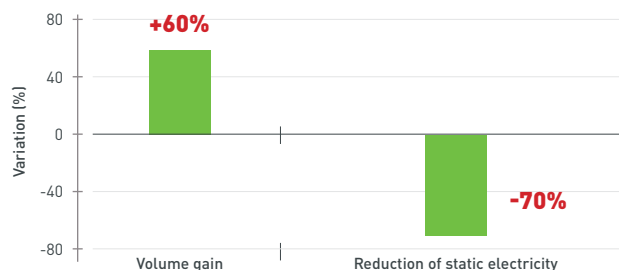
• Hair moisturization gain\*: **+83%**



\* 6 volunteers

• Sensory test\*:

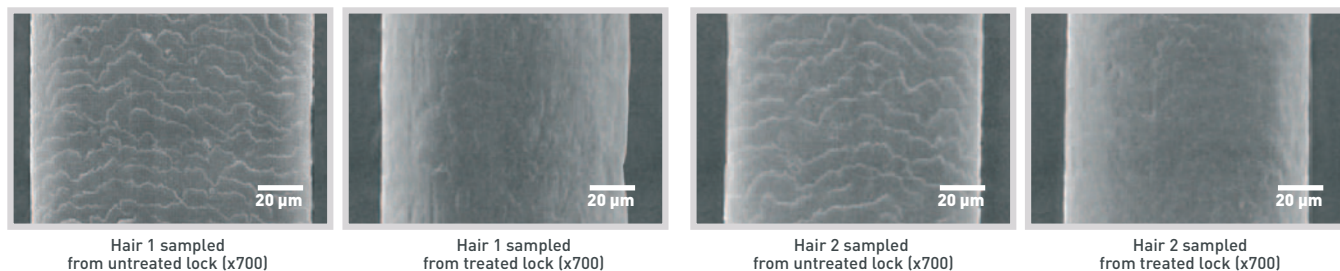
- > improved volume for **60%** of volunteers
- > less hair static for **70%** of volunteers



\* 15 volunteers

• Scalp moisturization gain\*: **+33%**  
(1 h after application)

VIEWING HAIR SURFACE APPEARANCE BY MICROSCOPY after application of **5% TILICINE®**



### FORMULATION

**Concentration for use:** 1 to 5%

### Caution for use

Add to emulsions, at the end of the preparation process, either cold or at 35-40 °C, during cooling.

### TECHNICAL DATA

#### Characteristics

**Organoleptic**      Appearance: liquid  
                                 Colour: yellow to amber

**Solubility**              Water: soluble

#### Storage

Keep in a dark place, in the original packaging and at ambient temperature (15-25 °C). Use rapidly once opened, or transfer to sterile packaging.

#### Tolerance tests

- Eye irritation: mildly irritating
- Skin irritation: non-irritant
- Mutagenicity: non-mutagenic

INCI name: Aqua/Water, Glycerin, Tilia tomentosa Bud Extract

Preservative: Several versions available, see specifications

**Warning:** The information in this document are the result of studies and interpretations based in part on published or generally accepted scientific data. They are provided for information purposes in terms of possible end applications and cannot be considered as instructions for use. We accept no responsibility concerning marketed formulas containing one or more of our products. Compounders must take all necessary precautions and ensure that all legal and administrative formalities have been fulfilled.