

GINSENG

RESTRUCTURING AGENT, COLLAGEN STIMULANT



RESTRUCTURES

GINSENG

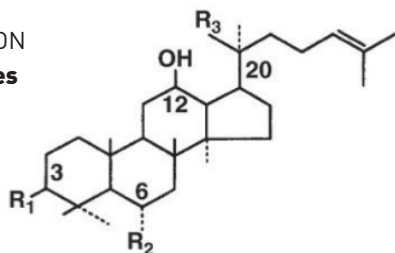
COSMÉLÈNES®

> ACTIONS

- Stimulates collagen synthesis
- Reinforces skin tone and firmness
- Improves skin nutrition

COMPOSITION

Ginsenosides



ORIGIN

Ginseng
Panax ginseng
(Root)

Recognized energizer in
Chinese pharmacopoeia.



> MECHANISM OF ACTION

Collagen synthesis stimulation reinforces skin's architecture and mechanical support, thus improving its biomechanical properties.

> COSMETIC BENEFITS

- Skin is firmer and more tone, with a tensor effect that smooths skin's surface.
- It appears younger.

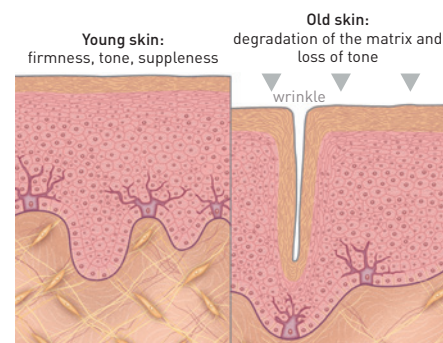
> COSMETIC USES

- ▶ **Anti-ageing care products**
- ▶ **Anti-wrinkle care products**
- ▶ **Mature skin care products**
- ▶ **Firming and stimulant care products**
- ▶ **Tired and brittle hair care products**

> SCIENTIFIC PROCESS

• Collagen fibres, mainly types I and III, form a mesh encompassing skin cells and other fibres forming the ECM (extracellular matrix). They are grouped into a network that forms skin's framework. Their arrangement contributes to interstitial flow, facilitating water and nutrient distribution to skin cells. Any depletion or degradation of these fibrils (ageing, disease, UV, pollution, etc.) tends to destabilize this structure, leading to the loss of biomechanical and functional properties. Conversely, the stimulation of collagenase synthesis promotes maintenance of skin tone, firmness and nutrition.

- Ginseng has been known from time immemorial for its therapeutic properties, including the prevention of ageing and in particular for its palliative effect on degenerative conditions in elderly people.



Maintenance of skin tone, firmness and nutrition thanks to the stimulation of collagen synthesis by fibroblasts

> **PROVEN EFFICACY**



PREDICTIVE EVALUATION OF COSMÉLÈNE® GINSENG EFFECT ON THE SKIN BIOMECHANICAL PROPERTIES.

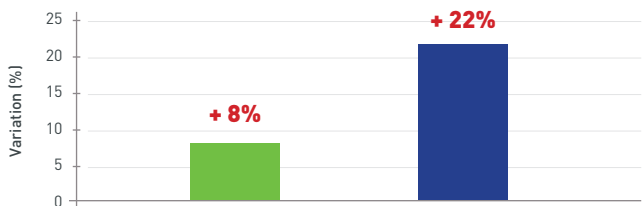
Studies conducted on 3 volunteers, COSMÉLÈNE® GINSENG at a concentration of 10%

- Effect on skin tone and firmness relative to the placebo formulation

> **tone: +8%**
> **firmness: +22%.**

For 2 out of 3 volunteers: tensor effect and increased firmness.

For all volunteers, increased tone.

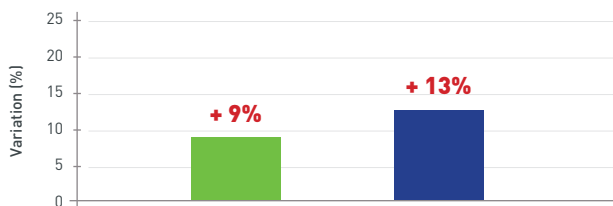


- Effect on skin tone and firmness relative to the untreated area

> **tone: +9%**
> **firmness: +13%.**

For 2 out of 3 volunteers: tensor effect and increased firmness.

For all volunteers, increased tone.



CUTOMETER® measurements. 21 days of twice-daily treatment.

■ Improves skin tone ■ Improves skin firmness

FORMULATION

Concentration for use: 1 to 10%

Caution for use:

Add to emulsions, at the end of the preparation process, either cold or at 35-40 °C, during cooling.

TECHNICAL DATA

Characteristics

Organoleptic	Appearance: liquid Colour: yellowish brown
---------------------	---

Storage

Keep in a dark place, in the original packaging and at ambient temperature (15-25 °C). Use rapidly once opened, or transfer to sterile packaging.

Tolerance tests

- Eye irritation: non-irritant
- Skin irritation: non-irritant

INCI name: Butylene Glycol, Water, Panax ginseng Root Extract

Preservative: None

Authorized:

Warning: The information in this document are the result of studies and interpretations based in part on published or generally accepted scientific data. They are provided for information purposes in terms of possible end applications and cannot be considered as instructions for use. We accept no responsibility concerning marketed formulas containing one or more of our products. Compounders must take all necessary precautions and ensure that all legal and administrative formalities have been fulfilled.